

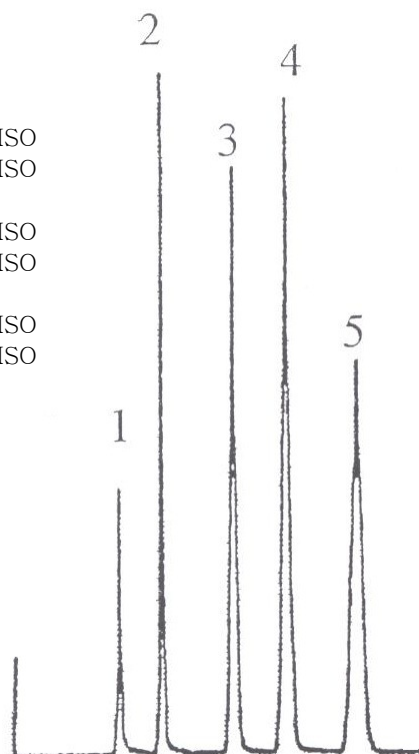
## APPLICATION NEWS

### Epic® C18 MSO HPLC Columns

**Epic C18-MSO (mass spec optimized)** is specifically engineered for the demands of LC-MS with or without the use of ultra-high pressure pumps. The flexibility of Epic C18-MSO is the result of our research into optimal particle diameters that can be used for both routine and ultra-high pressure pumping systems. Epic C18-MSO is based upon 2.3µm fully porous particles giving it superior retention even at high organic levels while maintaining excellent sample loading. Epic C18-MSO provides better speed, sensitivity and resolving power than 5µm and 3µm columns without the higher backpressures associated with sub-2µm materials and sample loading that far exceeds solid particles with porous layers. Many LC-MS applications rely on high level of organic modifier in the mobile phase, particularly in the for high performance trace analysis requiring high sensitivity and low level detection; Epic C18-MSO is ideally suited for these mobile phase conditions. Epic C18-MSO is product of high bonding density technology; high bonding density provides the maximum stationary phase interaction providing a platform for flexible mobile phase compositions. This densely bonded phase has been chemically stabilized to insure ultra-low bleed performance for even the most demanding LC/MS applications. In addition, this special chemical stabilization makes Epic C18-MSO compatible with all LC-MS mobile phases and buffer systems. A chromatogram of corticosteroids displays the unique capabilities of this stationary phase for a difficult separation. This column provides advanced high performance/high resolution LC-MS separations in a narrow bore short column formats without need of ultra-high pressure pumping system

#### Ordering Information:

50 X 2.1mm	512KD1-EC18-MSO
50 X 3.0mm	513KD1-EC18-MSO
100 X 2.1mm	522KD1-EC18-MSO
100 X 3.0mm	523KD1-EC18-MSO
150 X 2.1mm	532KD1-EC18-MSO
150 X 3.0mm	533KD1-EC18-MSO



#### Corticosteroids

Epic C18-MSO  
50mm X 2.1mmID 2.3µm  
Pore Size: 150Å  
Surface Area: 350m<sup>2</sup>/g

Mobile Phase: Water:Methanol  
(30:70, V/V)

Flow: 0.4mL/min  
Temp: 30°C

Detection: MS positive ion ESI-TOF

1. Triamcinolone
2. Hydrocortisone
3. Dexamethasone
4. Corticosterone
5. Deoxycorticosterone