



AquaSep™

# Application News

701 South Route 73 • West Berlin, New Jersey 08091-2621 • (856) 753-8400 • Fax (856) 753-8484

## *Catecholamines and Related Compounds*

Column: AquaSep 3micron  
100 X 4.6mm

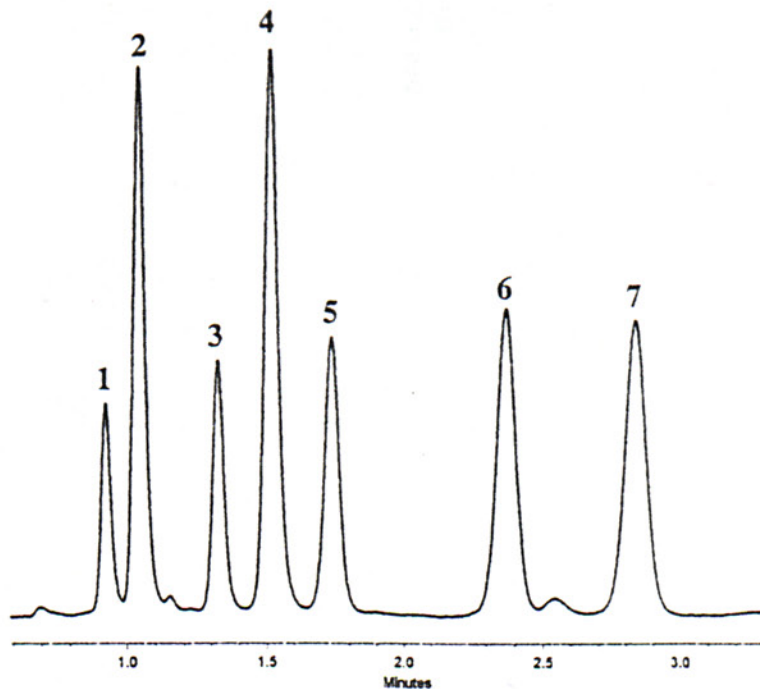
Part #: 125121-AQS

Mobile Phase: 50mM Phosphoric Acid/Methanol (93:7)

Flow: 1.3mL/min.

Detection: UV 225nm

Injection Volume: 5uL



Sample: 1. Norepinephrine (8 ng)  
2. Epinephrine (20 ng)  
3. 3-Hydroxytyramine (8 ng)  
4. Metanephrine (19ng)

5. L-DOPA (9 ng)  
6. Tyrosine (9ng)  
7. Serotonin (9 ng)

