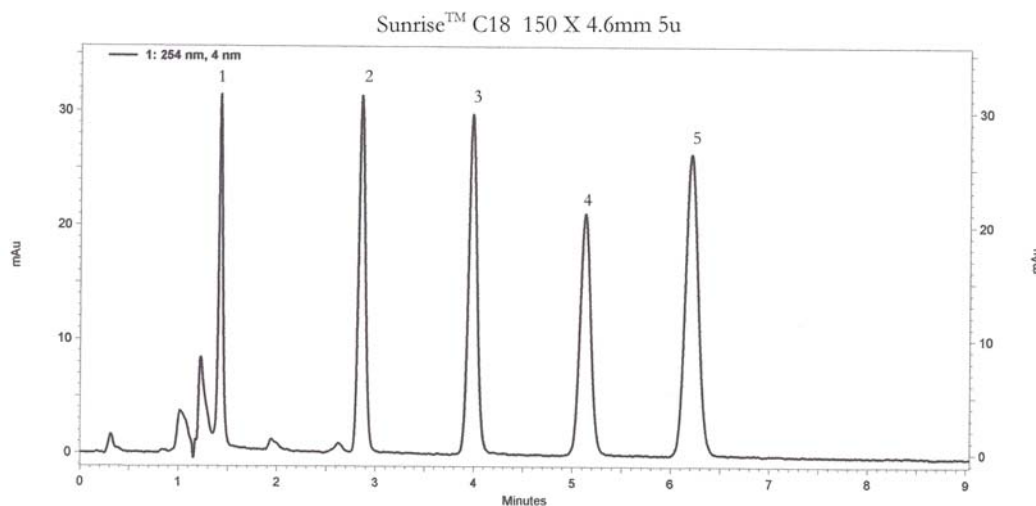


|   |  |
|---|--|
|  | <b>Sunrise™ C18 HPLC Columns</b>   |
|   | <h1>Application News</h1> <p>701 South Route 73 • West Berlin, New Jersey 08091-2621 • (856) 753-8400 • Fax (856) 753-8484</p> |

**Sunrise™** - *The Sunrise™ line is an identical selectivity to the Waters SunFire™ C18 and C8 materials.* Sunrise™ has a long column lifetime and excellent reproducibility. Sunrise™ columns provide symmetrical peaks for improved resolution and quantization of acidic neutral and basic compounds a low and intermediate pH range. Sunrise™ is available in many particle sizes as well as preparative bulk.

Specifications: Spherical 100Å; C8 = 11.5% carbon, C18 = 16% carbon; endcapped

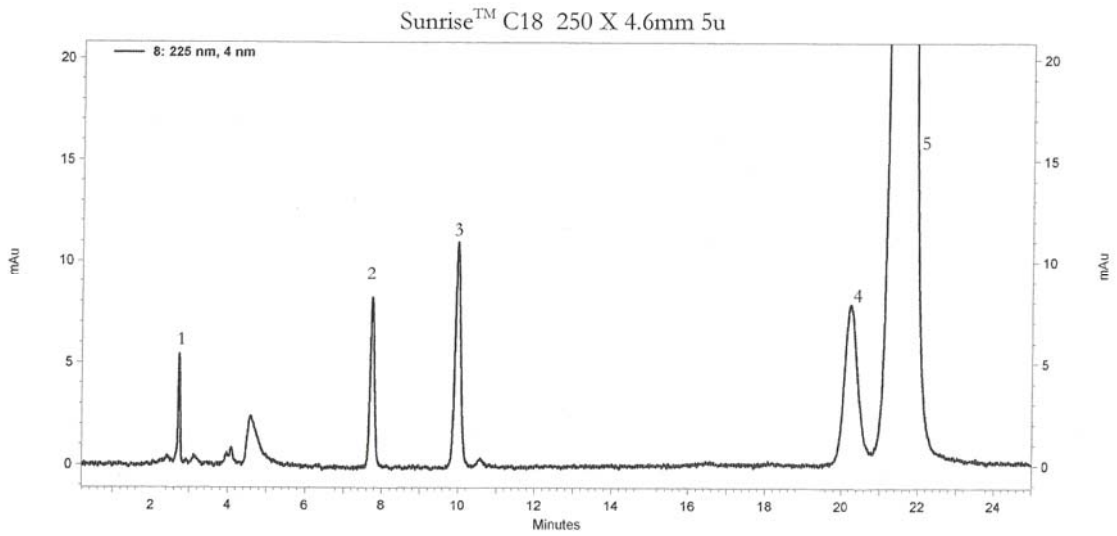


Sunrise™ C18 150 X 4.6mm 5u

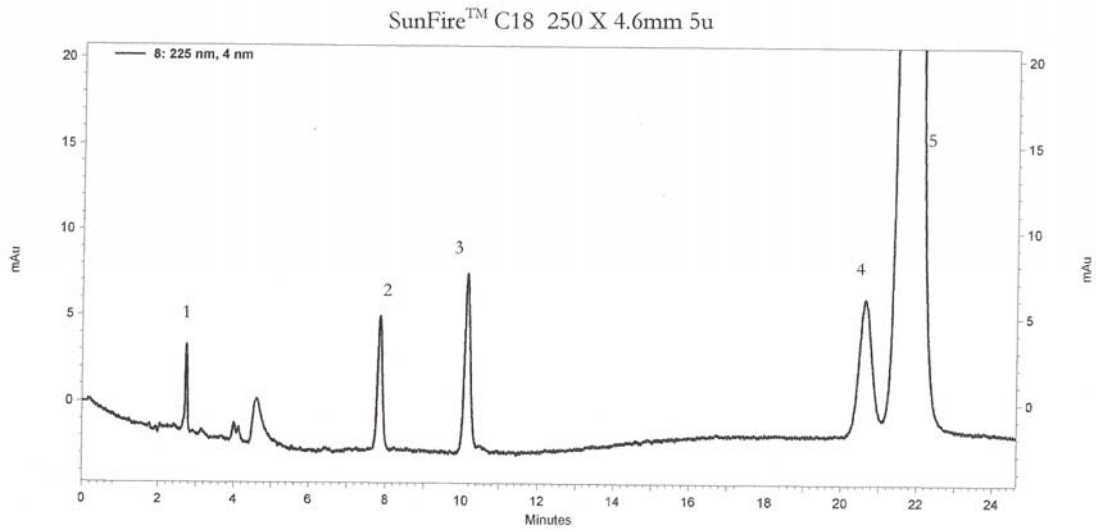
|                  |   |  |
|------------------|---|--|
| Mobile Phase     | : | 70/30 Acetonitrile/Water   |
| Flow Rate        | : | 1.0mL/min  |
| Detection        | : | UV @ 254nm   |
| Column Temp      | : | Ambient  |
| Injection volume | : | 5uL  |
| Sample           | : | 1. Uracil 20 ug/mL<br>2. Acetophenone 20 ug/mL<br>3. Benzene 2000 ug/mL<br>4. Toluene 2000 ug/mL<br>5. Naphthalene 200 ug/mL |

\* Sunfire™ is a registered trademark of Waters Corporation Inc.





Mobile Phase : 80/20 Methanol/Buffer (20mM potassium phosphate pH=7)  
 Flow Rate : 1.0mL/min  
 Detection : UV @ 225nm  
 Column Temp : 23°C  
 Injection Volume : 5 uL  
 Sample : 1. Uracil 2. Toluene 3. Ethylbenzene 4. Quinizarin 5. Amitriptyline



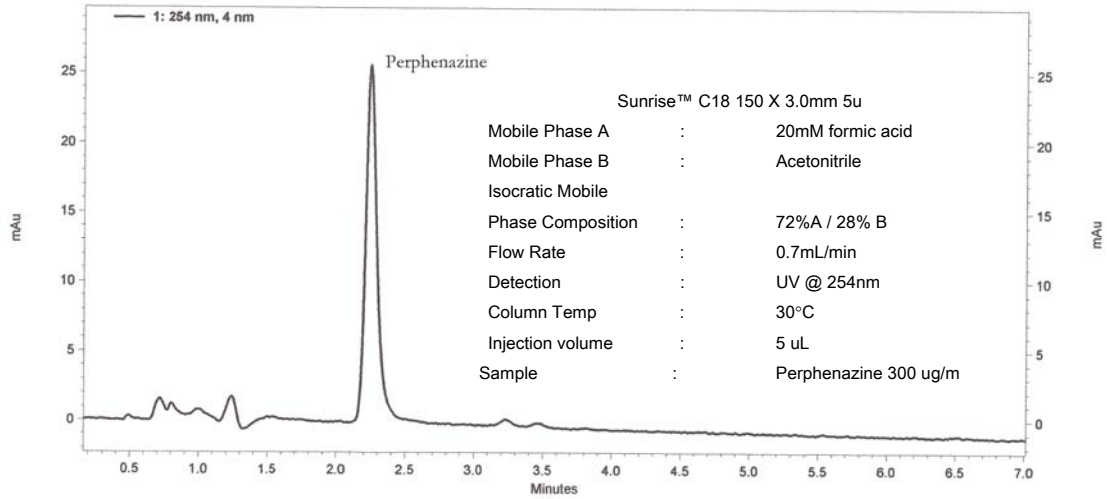
Mobile Phase : 80/20 Methanol/Buffer (20mM potassium phosphate pH=7)  
 Flow Rate : 1.0mL/min  
 Detection : UV @ 225nm  
 Column Temp : 23°C  
 Injection Volume : 5 uL  
 Sample : 1. Uracil 2. Toluene 3. Ethylbenzene 4. Quinizarin 5. Amitriptyline

ES INDUSTRIES  
 701 South Route 73  
 West Berlin NJ 08091

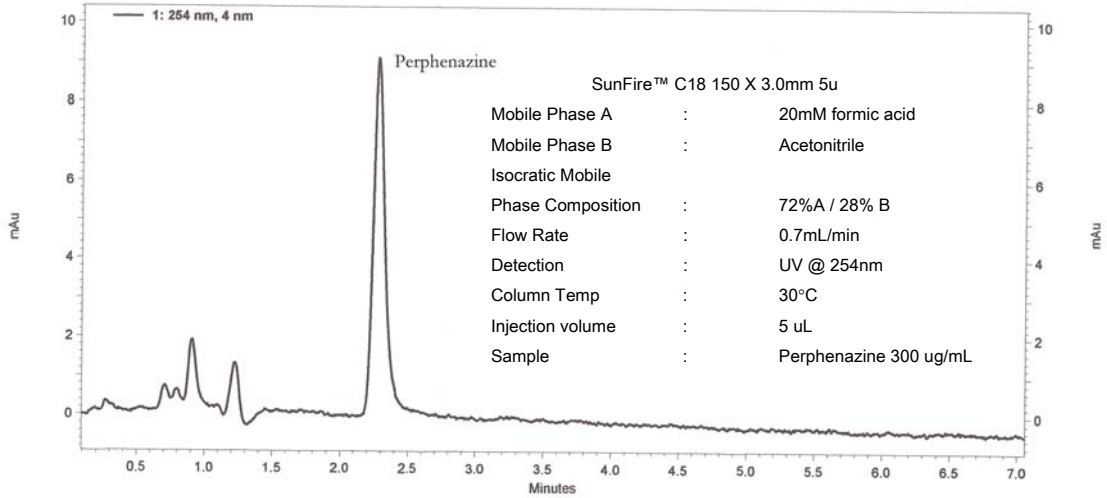
email: [esindustries@msn.com](mailto:esindustries@msn.com)  
 website: [www.esind.com](http://www.esind.com)

Toll-Free: 1-800-356-6140  
 Telephone: 856-753-8400  
 Fax: 856-753-8484

Sunrise™ C18 150 X 3.0mm 5u



SunFire™ C18 150 X 3.0mm 5u



Sunrise™ C18 3.5u 100A

|      | 4.6mm (ID)     | 4.0mm (ID)     | 3.2mm (ID)     | 2.1mm (ID)     |
|------|----------------|----------------|----------------|----------------|
| 5cm  | 115121-SNR-C18 | 114121-SNR-C18 | 11d121-SNR-C18 | 112121-SNR-C18 |
| 10cm | 125121-SNR-C18 | 124121-SNR-C18 | 12d121-SNR-C18 | 122121-SNR-C18 |
| 15cm | 135121-SNR-C18 | 134121-SNR-C18 | 13d121-SNR-C18 | 132121-SNR-C18 |

Sunrise™ C18 5u 100A

|      | 4.6mm (ID)     | 4.0mm (ID)     | 3.2mm (ID)     | 2.1mm (ID)     |
|------|----------------|----------------|----------------|----------------|
| 5cm  | 115221-SNR-C18 | 114221-SNR-C18 | 11d221-SNR-C18 | 112221-SNR-C18 |
| 10cm | 125221-SNR-C18 | 124221-SNR-C18 | 12d221-SNR-C18 | 122221-SNR-C18 |
| 15cm | 135221-SNR-C18 | 134221-SNR-C18 | 13d221-SNR-C18 | 132221-SNR-C18 |
| 25cm | 155221-SNR-C18 | 154221-SNR-C18 | 15d221-SNR-C18 | 152221-SNR-C18 |

ES INDUSTRIES  
701 South Route 73  
West Berlin NJ 08091

email: [esindustries@msn.com](mailto:esindustries@msn.com)  
website: [www.esind.com](http://www.esind.com)

Toll-Free: 1-800-356-6140  
Telephone: 856-753-8400  
Fax: 856-753-8484