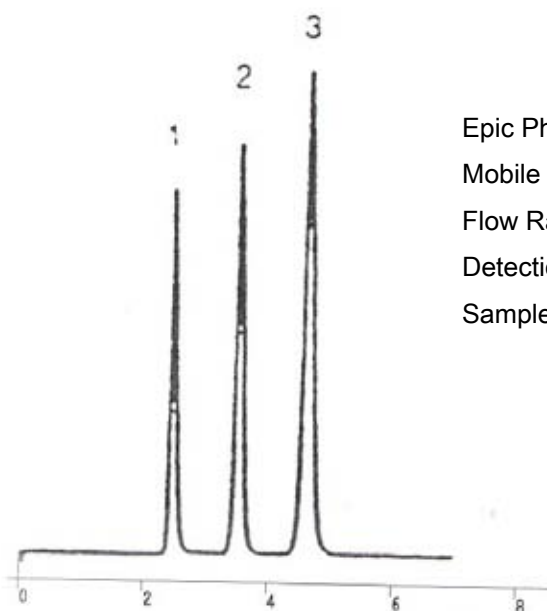


 <b>INDUSTRIES</b>	<b>Epic Phenyl Hexyl HPLC Columns</b>
	<b>Application News</b> <small>701 South Route 73 • West Berlin, New Jersey 08091-2621 • (856) 753-8400 • Fax (856) 753-8484</small>

**Epic Phenyl Hexyl** - Epic Phenyl-Hexyl uses a hexyl-linked phenyl phase. The hexyl alkyl chain provides for unique selectivity and increased hydrolytic stability when compared to propyl-linked chemistry. The Epic high-density bonding technology delivers to the chromatographer superior performance, durability, and enhanced lot-to-lot reproducibility. Epic Phenyl-Hexyl offers the chromatographer a truly superior phenyl based interaction for enhanced chromatographic performance. A chromatogram containing a rapid baseline separation of a mixture of Benzodiazepines is shown below. This mixture is difficult to separate on a typical phenyl type column.



Epic Phenyl Hexyl 150 X 4.6mm 5 micron  
 Mobile Phase : Acetonitrile / Water (80:20)  
 Flow Rate : 1.0mL/min  
 Detection : UV @ 235nm  
 Sample : 1. Lormetazepam  
           2. Diazepam  
           3. Oxazepam

**Epic Phenyl Hexyl 5u 120A**

	<u>4.6mm (ID)</u>	<u>4.0mm (ID)</u>	<u>3.2mm (ID)</u>	<u>2.1mm (ID)</u>
5cm	115291-HRM-C18	114291-HRM-C18	11d291-HRM-C18	112291-HRM-C18
10cm	125291-HRM-C18	124291-HRM-C18	12d291-HRM-C18	122291-HRM-C18
15cm	135291-HRM-C18	134291-HRM-C18	13d291-HRM-C18	132291-HRM-C18
25cm	155291-HRM-C18	154291-HRM-C18	15d291-HRM-C18	152291-HRM-C18

ES INDUSTRIES  
 701 South Route 73  
 West Berlin NJ 08091

Toll-Free: 1-800-356-6140  
 Telephone: 856-753-8400  
 Fax: 856-753-8484