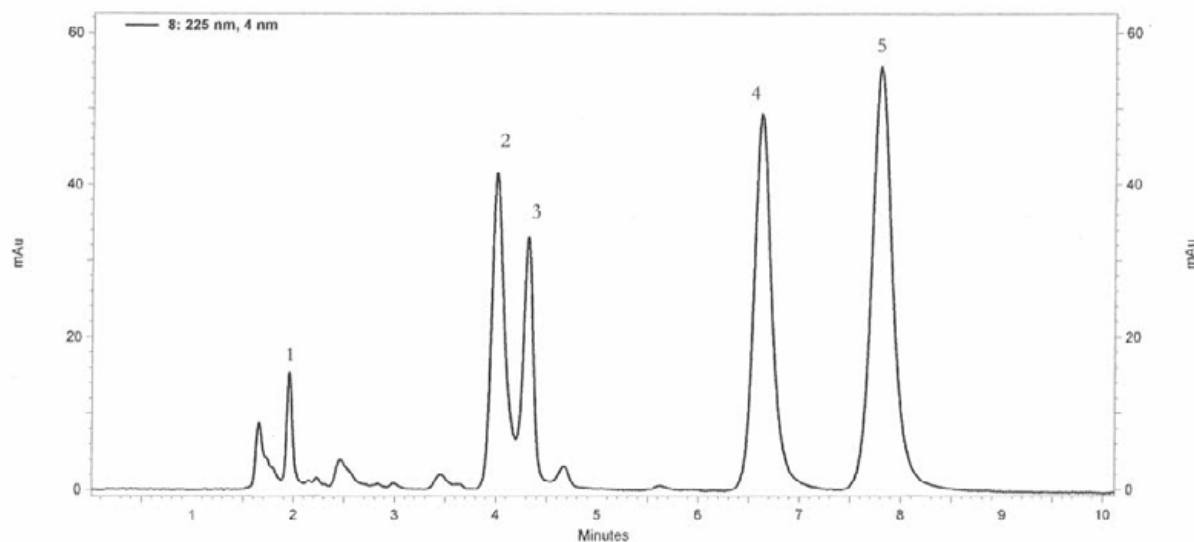


HyperSelect™ – The HyperSelect line is an equivalent to Thermo Fisher Hypersil. The most popular material type is ODS; ES Industries offers the HyperSelect ODS column with identical selectivities in both 3 and 5 micron particles. In addition to the ODS, HyperSelect is available as BDS-C18, BDS-C8, endcapped C8, non-endcapped C8, endcapped phenyl, non-endcapped phenyl, silica, TMS, amino, non-endcapped cyano, endcapped cyano, SAX and SCX. Excellent efficiencies, peak shape and resolution are obtained for virtually all Hypersil HPLC applications from high quality HyperSelect HPLC columns. Range of particle sizes offers amazing versatility for capillary and LC/MS to prep and process scale applications. Several applications on HyperSelect are shown below.

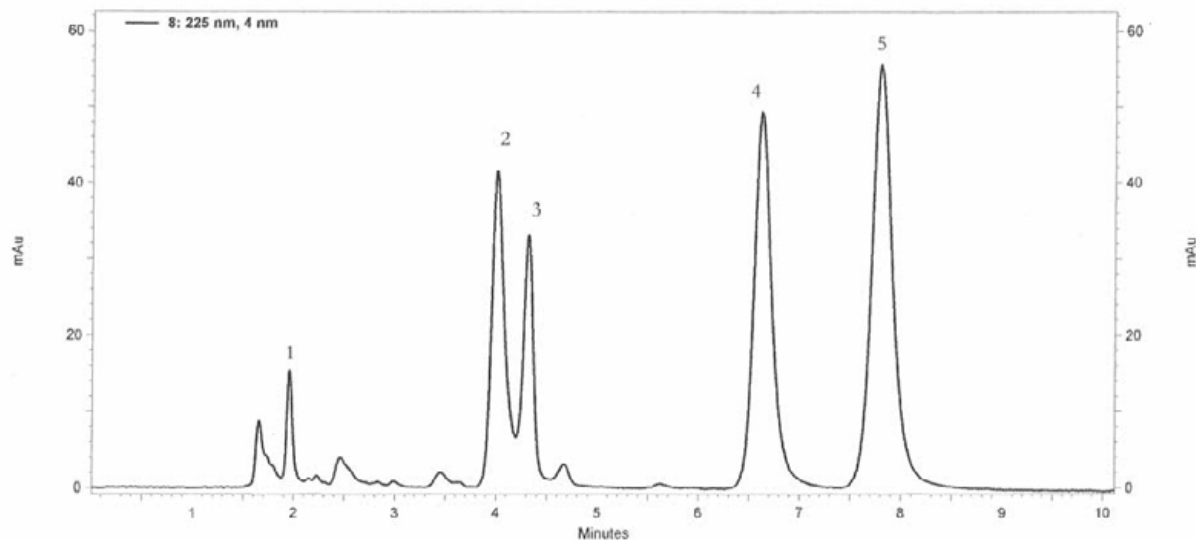
HyperSelect™ BDS C18 150 X 4.6mm 5u



HyperSelect™ BDS C18 150 X 4.6mm 5u

Mobile Phase	:	80/20 Methanol/Buffer (20mM potassium phosphate pH=7)
Flow Rate	:	1.0mL/min
Detection	:	UV @ 225nm
Column Temp	:	23°C
Injection Volume	:	5 uL
Sample	:	1. Norephedrine 2. Nortriptyline 3. Toluene 4. Imipramine 5. Amitriptyline

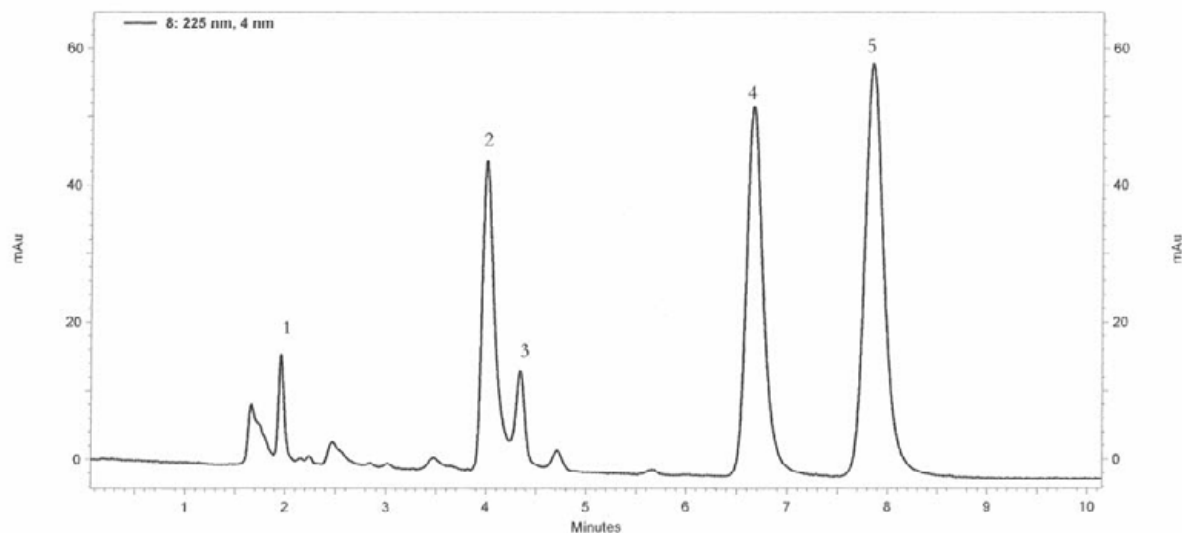
HyperSelect™ BDS C18 150 X 4.6mm 5u



HyperSelect™ BDS C18 150 X 4.6mm 5u

Mobile Phase	:	80/20 Methanol/Buffer (20mM potassium phosphate pH=7)
Flow Rate	:	1.0mL/min
Detection	:	UV @ 225nm
Column Temp	:	23°C
Injection Volume	:	5 uL
Sample	:	1. Norephedrine 2. Nortriptyline 3. Toluene 4. Imipramine 5. Amitriptyline

Hypersil™ BDS C18 150 X 4.6mm 5u

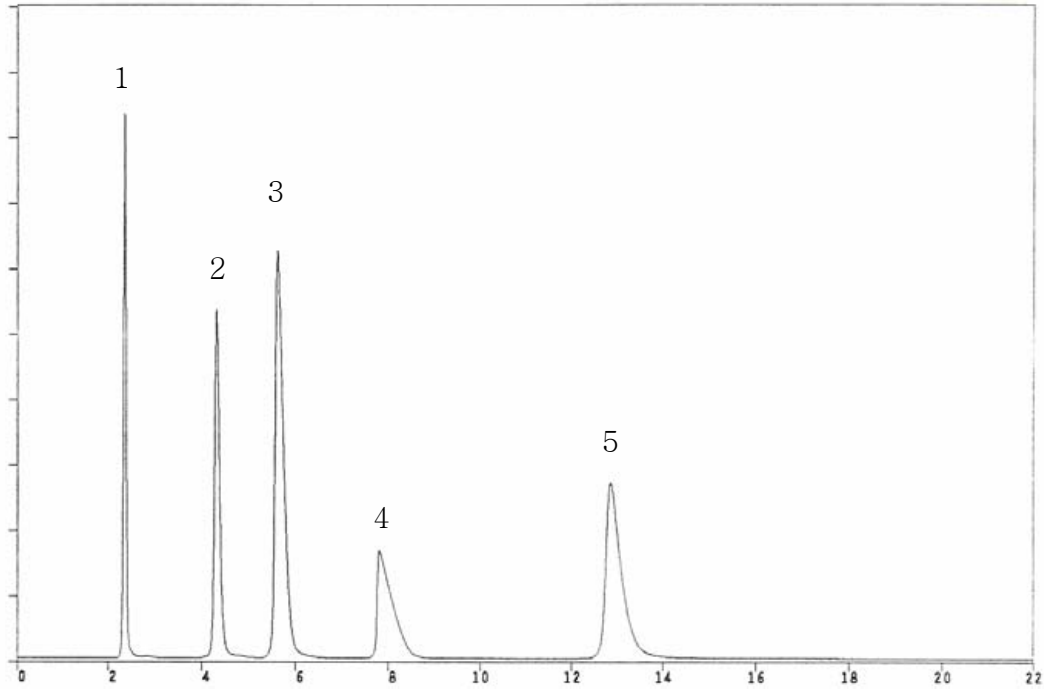


Hypersil™ BDS C18 150 X 4.6mm 5u

Mobile Phase	:	80/20 Methanol/Buffer (20mM potassium phosphate pH=7)
Flow Rate	:	1.0mL/min
Detection	:	UV @ 225nm
Column Temp	:	23°C
Injection Volume	:	5 uL
Sample	:	1. Norephedrine 2. Nortriptyline 3. Toluene 4. Imipramine 5. Amitriptyline

* Hypersil™ is a trademark of Thermo Fisher Scientific.

Vitamins



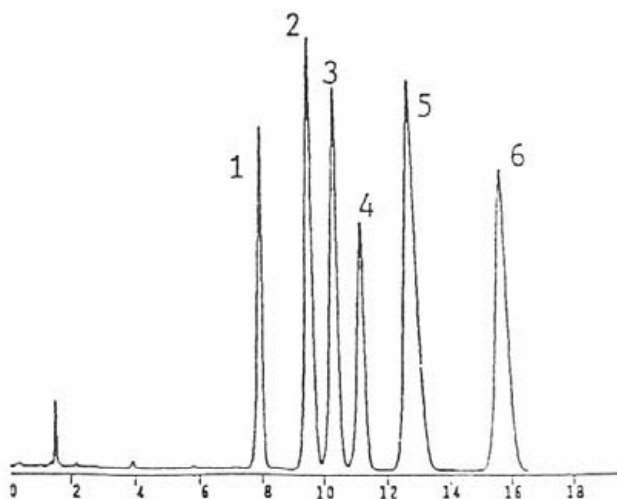
HyperSelect™ BDS C8 250 X 4.6mm 5u

Mobile Phase : A : 0.1M NaOAc pH = 5.2
 B : Acetonitrile
 Flow Rate : 1.0mL/min
 Detection : UV @ 254nm
 Column Temp : 23°C
 Sample : 1. Niacin
 2. Thiamine
 3. Folic Acid
 4. Nicotinamide
 5. Cyanocobalamin

HyperSelect™ BDS C8 5u 120A

	4.6mm (ID)	4.0mm (ID)	3.2mm (ID)	2.1mm (ID)
5cm	115291-HPC-BDSC8	114291-HPC-BDSC8	11d291-HPC-BDSC8	112291-HPC-BDSC8
10cm	125291-HPC-BDSC8	124291-HPC-BDSC8	12d291-HPC-BDSC8	122291-HPC-BDSC8
15cm	135291-HPC-BDSC8	134291-HPC-BDSC8	13d291-HPC-BDSC8	132291-HPC-BDSC8
25cm	155291-HPC-BDSC8	154291-HPC-BDSC8	15d291-HPC-BDSC8	152291-HPC-BDSC8

Nucleotides and Nucleosides



HyperSelect™ ODS 150 X 4.6mm 5u

Mobile Phase : A : 150mM Potassium dihydrogen phosphate +
 150mM KCL adjusted to pH = 6 with KOH
 B : 15% (v/v) acetonitrile in A

Flow Rate : 1.0mL/min

Detection : UV @ 254nm

Column Temp : 23°C

Sample : 1. GTP
 2. GMP
 3. IMP
 4. ATP
 5. ADP
 6. Hypoxanthine

HyperSelect™ BDS C18 5u 120A

	4.6mm (ID)	4.0mm (ID)	3.2mm (ID)	2.1mm (ID)
5cm	115291-HPC-BDSC18	114291-HPC-BDSC18	11d291-HPC-BDSC18	112291-HPC-BDSC18
10cm	125291-HPC-BDSC18	124291-HPC-BDSC18	12d291-HPC-BDSC18	122291-HPC-BDSC18
15cm	135291-HPC-BDSC18	134291-HPC-BDSC18	13d291-HPC-BDSC18	132291-HPC-BDSC18
25cm	155291-HPC-BDSC18	154291-HPC-BDSC18	15d291-HPC-BDSC18	152291-HPC-BDSC18

HyperSelect™ ODS 5u 120A

	4.6mm (ID)	4.0mm (ID)	3.2mm (ID)	2.1mm (ID)
5cm	115291-HPC-ODS	114291-HPC-ODS	11d291-HPC-ODS	112291-HPC-ODS
10cm	125291-HPC-ODS	124291-HPC-ODS	12d291-HPC-ODS	122291-HPC-ODS
15cm	135291-HPC-ODS	134291-HPC-ODS	13d291-HPC-ODS	132291-HPC-ODS
25cm	155291-HPC-ODS	154291-HPC-ODS	15d291-HPC-ODS	152291-HPC-ODS

ES INDUSTRIES
 701 South Route 73
 West Berlin NJ 08091

Toll-Free: 1-800-356-6140
 Telephone: 856-753-8400
 Fax: 856-753-8484

email: esindustries@msn.com
 website: www.esind.com